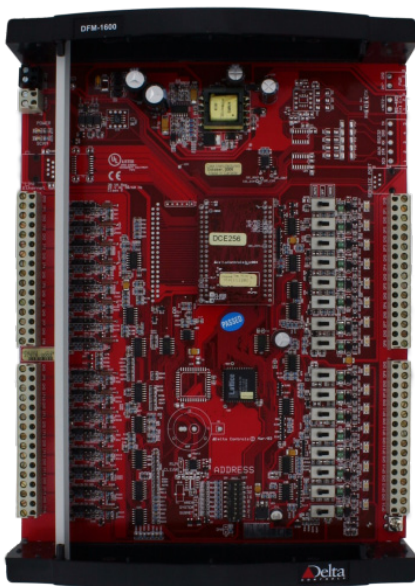


Field Modules

DFM-1616

Description

The DFM-1616 is an I/O expansion module for the system controller DSC-1616E, Access System Manager (ASM-24E), enteliBUS® Controller (eBCON) and enteliBUS Manager (eBMGR). It provides an additional 16 universal inputs and 16 analog outputs. The DFM-1616 is a LINKnet device and relies on its NET1 port to communicate to its parent controller.



Application

The DFM-1616 provides additional I/O for the DSC-1616E, ASM-24E, eBCON and eBMGR. Up to two I/O modules may be added; this additional I/O is programmed within the parent DSC-1616E in the same manner as local I/O.

When combined with up to two DFM-1616 I/O modules, the DSC-1616E forms a high-density I/O controller intended to fit a range of central plant applications requiring up to 48 inputs and 48 outputs. This type of system is also suited for elevator control.

Features

- ▶ 16 universal inputs and 16 analog outputs
- ▶ Easy-to-mount housing
- ▶ Hand / Off / Auto (HOA) switches with position feedback on all outputs
- ▶ Supports communicating on LINKnet
- ▶ Firmware can be flash loaded over the network
- ▶ Tri-colored status LEDs on all outputs

Specifications

Inputs

Universal Inputs (10-bit) supporting:
0-5 VDC
0-10 VDC
10 kΩ Thermistor
4-20 mA
Dry Contact (using the 10 kΩ Thermistor jumper setting)

Outputs

16 Analog Outputs (0-10 VDC, 8-bit), software configured as analog or binary

Device Addressing

Set via DIP switch and jumpers

Connectors

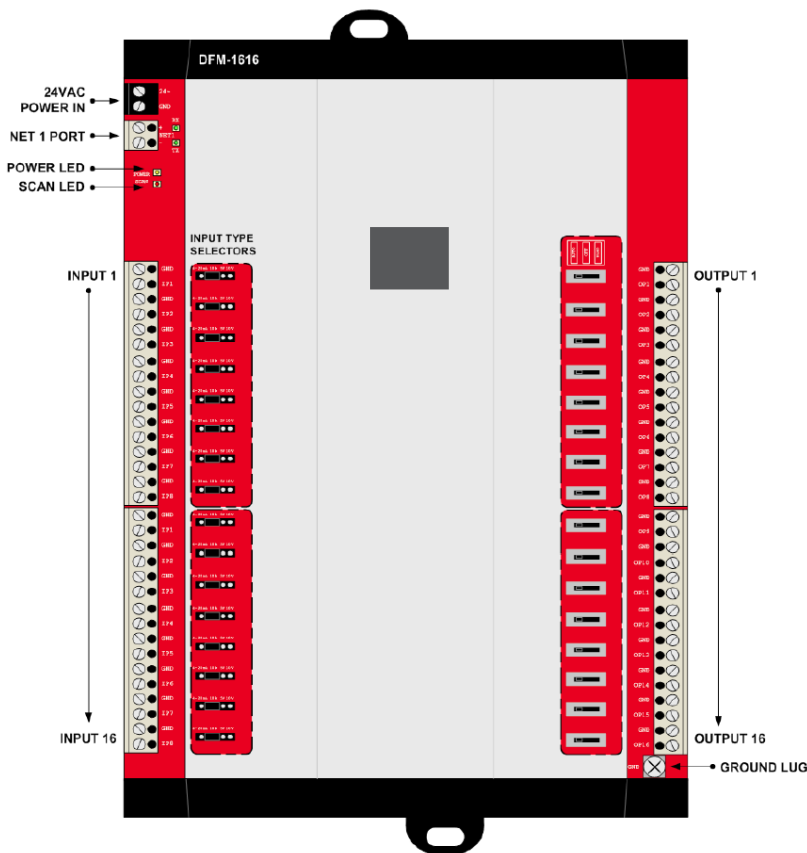
Removable screw-type terminal connectors

Wiring Class

Class 2

Field Modules

DFM-1616: Board Layout Diagram



Specifications (Continued)

Power

24 VAC 50/60 Hz @ 40 VA with LED status

Technology

16-bit processor
1 MB (8-megabit) flash memory
256 KB SRAM database memory
CPU status LED

Communications Port

RS-485 NET1
Delta LINKnet up to 76800 bps, max
12 devices on LINKnet with no more
than 2 DFM devices

Ambient

32° to 131°F (0° to 55°C)
10 to 90% RH (non-condensing)

Dimensions

12 x 8¹/₈ x 2¹/₂ in. (30.6 x 20.5 x 6.4 cm)
with housing

Weight

2.20 lb. (1 kg) with housing

Compliance

CE
FCC

Listings

UL 916 Listed
UL 864 Listed for UL 864 product
numbers

Ordering

Order the DFM-1616 with the desired options according to the following product numbers:

DFM-1616	LINKnet module, housing, 16 universal inputs, 16 analog outputs with HOA
DFM-1616-UL864-340	DFM-1616 with UL 864 listing

Accessories

TRM-768	Delta Network Terminator for BACnet MS/TP*
CON-768BT	Delta Bluetooth Service Tool

* UL 864 versions available

enteliBUS is a registered trademark of Delta Controls Inc.

Updated July 2015

Subject to change without notice.